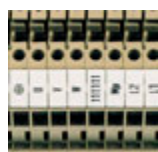


TERMINAL MARKING SOLUTIONS - PRINTED TO ORDER

TERMINAL MARKING SOLUTIONS



MCBSTR6/120P installed



AS3/10G (.....) installed

MCSB4/200P	Terminal Marker - 4 mm wide - Maxicard of 200 Markers (4946.7)
MCSB5/200P	Terminal Marker - 5 mm wide - Maxicard of 200 Markers (3300.7)
MCSB6/200P	Terminal Marker - 6 mm wide - Maxicard of 200 Markers (3301.7)
MCSB8/160P	Terminal Marker - 8 x 8 mm - Maxicard of 160 Markers (3328.7)
MCBSTR5/144P	Terminal Marker - 5 x 10 mm - Maxicard of 144 Markers (3309.7)
MCBSTR5/144MIP	Terminal Marker - 5 x 10 mm - Maxicard of 144 Markers (3310.7)
MCBSTR5x12/144P	Terminal Marker - 5 x 12 mm - Maxicard of 144 Markers (3380.7)
MCBSTR6/120P	Terminal Marker - 6 x 12 mm - Maxicard of 120 Markers (3314.7)
MCBSTR8x12P	Terminal Marker - 8 x 12 mm - Maxicard of 84 Markers (9406.7)
MCBSTR10x12/40P	Terminal Marker - 10 x 12 mm - Maxicard of 40 Markers (9408.7)
AS3/10G (.....)	Marking Letter, Numbers (in Strips of 10) - Numbers, Letters & Symbols

MARKER HOLDERS FOR TERMINALS & END STOPS - PRINTED TO ORDER



SchT4 fitted with Markers



SchT7 installed



SchT9 installed



GT2 with Accessories

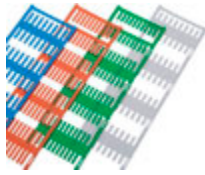
SchT3/AS3/10	AS3/10 Terminal Marker Carrier - 3 Numbers
SchT4/AS3/10	AS3/10 Terminal Marker Carrier - 3 Numbers
SchT5/AS3/10	AS3/10 Terminal Marker Carrier - 3 Numbers
SchT6/AS3/10	AS3/10 Terminal Marker Carrier - 3 Numbers
SchT7	Terminal Marker Carrier with Short Joint
SchT7L	Terminal Marker Carrier with Long Joint
ESO1	Blank Tag Insert for SchT7 & SchT7L - Strip of 10
STR	Protective Strip for ESO
SchT2	Terminal Marker Carrier to be used with ES../K/ST
ESO2	Blank Tag Insert for SchT2 - Strip of 10
STR2	Protective Strip for ESO2
SchT9P	Group Marker for ES35/2/K & ES35/K/ST end stop - 8mm wide - Printed
SchT10P	Group Marker for ES35/K/ST - Printed
ZSchT1	Marking Carrier for ZES35
ZSchT3	Marking Carrier for ZES35
ZSchT4	Marking Carrier for ZES35
ZSchT5	Marking Carrier for ZES35
ESO1	Blank Tag Insert for ZSchT1, ZSchT2, ZSchT3, ZSchT4 - 10 Tags
ESO3	Blank Tag Insert for ZSchT5 - 10 Tags
STR	Protective Cover for ESO
STR3	Protective Cover for ESO3
ZSchT6P	Group Marker for ZES35 end stop - Printed
GT1	Group Marker Holder - 9.5mm wide
ESO-GT1	Complete sheet of 140 blank insert for GT1 Holder
STR-GT1	Protective cover for E50-GT1
GT2	Group Marker Holder 19.5mm wide
ESO-GT2	Complete sheet of 60 blank insert for GT2 Holder
STR-GT2	Protective cover for E50-GT2

SchT9P & SchT10P & ZschT6P are printed to order - please submit with Excel Spreadsheet

CABLE MARKING

- PRINTED TO ORDER

PRINTED CABLE MARKING SOLUTIONS - SLEEVE INSERT TYPE



MCESS15/80 range



MCESS range installed



MCESS range installed



MCESS range with sleeve

MCESS12/64WP	Insertable Tags - 12mm long - Maxicard of 64 Tags - white (3316.7)
MCESS12/64BP	Insertable Tags - 12mm long - Maxicard of 64 Tags - blue (3316.5)
MCESS12/64RP	Insertable Tags - 12mm long - Maxicard of 64 Tags - red (3316.9)
MCESS12/64YP	Insertable Tags - 12mm long - Maxicard of 64 Tags - yellow (3316.8)
MCESS12/64GP	Insertable Tags - 12mm long - Maxicard of 64 Tags - green (3316.1)
MCESS12/64OP	Insertable Tags - 12mm long - Maxicard of 64 Tags - orange (3316.3)
MCESS15/80WP	Insertable Tags - 15mm long - Maxicard of 80 Tags - white (3317.7)
MCESS15/80BP	Insertable Tags - 15mm long - Maxicard of 80 Tags - blue (3317.5)
MCESS15/80RP	Insertable Tags - 15mm long - Maxicard of 80 Tags - red (3317.9)
MCESS15/80YP	Insertable Tags - 15mm long - Maxicard of 80 Tags - yellow (3317.8)
MCESS15/80GP	Insertable Tags - 15mm long - Maxicard of 80 Tags - green (3317.1)
MCESS15/80OP	Insertable Tags - 15mm long - Maxicard of 80 Tags - orange (3317.3)
MCESS18/64WP	Insertable Tags - 18mm long - Maxicard of 64 Tags - white (3318.7)
MCESS18/64BP	Insertable Tags - 18mm long - Maxicard of 64 Tags - blue (3318.5)
MCESS18/64RP	Insertable Tags - 18mm long - Maxicard of 64 Tags - red (3318.9)
MCESS18/64YP	Insertable Tags - 18mm long - Maxicard of 64 Tags - yellow (3318.8)
MCESS18/64GP	Insertable Tags - 18mm long - Maxicard of 64 Tags - green (3318.1)
MCESS18/64OP	Insertable Tags - 18mm long - Maxicard of 64 Tags - orange (3318.3)
MCESS20/80WP	Insertable Tags - 20mm long - Maxicard of 80 Tags - white (3319.7)
MCESS20/80BP	Insertable Tags - 20mm long - Maxicard of 80 Tags - blue (3319.5)
MCESS20/80RP	Insertable Tags - 20mm long - Maxicard of 80 Tags - red (3319.9)
MCESS20/80YP	Insertable Tags - 20mm long - Maxicard of 80 Tags - yellow (3319.8)
MCESS20/80GP	Insertable Tags - 20mm long - Maxicard of 80 Tags - green (3319.1)
MCESS20/80OP	Insertable Tags - 20mm long - Maxicard of 80 Tags - orange (3319.3)
MCESS30/60WP	Insertable Tags - 30mm long - Maxicard of 60 Tags - white (3354.7)
MCESS30/60BP	Insertable Tags - 30mm long - Maxicard of 60 Tags - blue (3354.5)
MCESS30/60RP	Insertable Tags - 30mm long - Maxicard of 60 Tags - red (3354.9)
MCESS30/60YP	Insertable Tags - 30mm long - Maxicard of 60 Tags - yellow (3354.8)
MCESS30/60GP	Insertable Tags - 30mm long - Maxicard of 60 Tags - green (3354.1)
MCESS30/60OP	Insertable Tags - 30mm long - Maxicard of 60 Tags - orange (3354.3)

All Maxicard products are printed to order - please submit with Excel Spreadsheet

PRINTED CLIP-ON CABLE MARKING



MCKMC0/4x12WP	12mm long – for Cable O/D of 0.9 - 2.6mm - Maxicard 40 tags - white
MCKMC0/4x21WP	21mm long – for Cable O/D of 0.9 - 2.6mm - Maxicard 40 tags - white
MCKMC0/4x30WP	30mm long – for Cable O/D of 0.9 - 2.6mm - Maxicard 30 tags - white
MCKMC1/4x12WP	12mm long – for Cable O/D of 2.0 - 3.0mm - Maxicard 40 tags - white

All Maxicard products are printed to order - please submit with Excel Spreadsheet

CABLE MARKING SLEEVES

CABLE MARKING SOLUTIONS - SLEEVES



KH and KHE installed



MCESS range with sleeve

KH02/12	Cable Marker Sleeve - 12mm long - for cable O/D 1.3-3.0mm - pkt of 200 (4900.0)
KH02/15	Cable Marker Sleeve - 15mm long - for cable O/D 1.3-3.0mm - pkt of 200 (4901.0)
KH02/18	Cable Marker Sleeve - 18mm long - for cable O/D 1.3-3.0mm - pkt of 200 (4902.0)
KH02/21	Cable Marker Sleeve - 21mm long - for cable O/D 1.3-3.0mm - pkt of 200 (4903.0)
KH02/30	Cable Marker Sleeve - 30mm long - for cable O/D 1.3-3.0mm - pkt of 200 (9390.0)
KH10/12	Cable Marker Sleeve - 12mm long - for cable O/D 2.5-5.0mm - pkt of 200 (4904.0)
KH10/15	Cable Marker Sleeve - 15mm long - for cable O/D 2.5-5.0mm - pkt of 200 (4905.0)
KH10/18	Cable Marker Sleeve - 18mm long - for cable O/D 2.5-5.0mm - pkt of 200 (4906.0)
KH10/21	Cable Marker Sleeve - 21mm long - for cable O/D 2.5-5.0mm - pkt of 200 (4907.0)
KH10/30	Cable Marker Sleeve - 30mm long - for cable O/D 2.5-5.0mm - pkt of 200 (9391.0)
KH20/12	Cable Marker Sleeve - 12mm long - for cable O/D 4.0-10.0mm - pkt of 100 (4908.0)
KH20/15	Cable Marker Sleeve - 15mm long - for cable O/D 4.0-10.0mm - pkt of 100 (4909.0)
KH20/18	Cable Marker Sleeve - 18mm long - for cable O/D 4.0-10.0mm - pkt of 100 (4910.0)
KH20/21	Cable Marker Sleeve - 21mm long - for cable O/D 4.0-10.0mm - pkt of 100 (4911.0)
KH20/30	Cable Marker Sleeve - 30mm long - for cable O/D 4.0-10.0mm - pkt of 100 (9392.0)
KH30/12	Cable Marker Sleeve - 12mm long - for cable O/D 8.0-16.0mm - pkt of 50 (4912.0)
KH30/15	Cable Marker Sleeve - 15mm long - for cable O/D 8.0-16.0mm - pkt of 50 (4913.0)
KH30/18	Cable Marker Sleeve - 18mm long - for cable O/D 8.0-16.0mm - pkt of 50 (4914.0)
KH30/21	Cable Marker Sleeve - 21mm long - for cable O/D 8.0-16.0mm - pkt of 50 (4915.0)
KH30/30	Cable Marker Sleeve - 30mm long - for cable O/D 8.0-16.0mm - pkt of 50 (9393.0)

CABLE MARKING SOLUTIONS - BULK PACK SLEEVES



KH and KHE installed

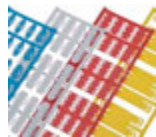


MCESS range with sleeve

KHE0.5/12	Cable Marker Sleeve - 12mm long - for cable O/D 0.3-2.2 mm - pkt of 2000 (9360.0)
KHE0.5/15	Cable Marker Sleeve - 15mm long - for cable O/D 0.3-2.2 mm - pkt of 2000 (9361.0)
KHE0.5/18	Cable Marker Sleeve - 18mm long - for cable O/D 0.3-2.2 mm - pkt of 1000 (9362.0)
KHE0.5/21	Cable Marker Sleeve - 21mm long - for cable O/D 0.3-2.2 mm - pkt of 1000 (9363.0)
KHE0.5/30	Cable Marker Sleeve - 30mm long - for cable O/D 0.3-2.2 mm - pkt of 500 (9364.0)
KHE2.5/12	Cable Marker Sleeve - 12mm long - for cable O/D 2.0-3.7mm - pkt of 1000 (9365.0)
KHE2.5/15	Cable Marker Sleeve - 15mm long - for cable O/D 2.0-3.7mm - pkt of 1000 (9366.0)
KHE2.5/18	Cable Marker Sleeve - 18mm long - for cable O/D 2.0-3.7mm - pkt of 1000 (9367.0)
KHE2.5/21	Cable Marker Sleeve - 21mm long - for cable O/D 2.0-3.7mm - pkt of 3000 (9368.0)
KHE2.5/30	Cable Marker Sleeve - 30mm long - for cable O/D 2.0-3.7mm - pkt of 1000 (9369.0)
KHE4.0/12	Cable Marker Sleeve - 12mm long - for cable O/D 3.5-4.3mm - pkt of 1000 (9370.0)
KHE4.0/15	Cable Marker Sleeve - 15mm long - for cable O/D 3.5-4.3mm - pkt of 1000 (9371.0)
KHE4.0/18	Cable Marker Sleeve - 18mm long - for cable O/D 3.5-4.3mm - pkt of 2000 (9372.0)
KHE4.0/21	Cable Marker Sleeve - 21mm long - for cable O/D 3.5-4.3mm - pkt of 2000 (9373.0)
KHE4.0/30	Cable Marker Sleeve - 30mm long - for cable O/D 3.5-4.3mm - pkt of 1000 (9374.0)
KHE10.0/15	Cable Marker Sleeve - 15mm long - for cable O/D 4.3-6.3mm - pkt of 500 (9376.0)
KHE25.0/15	Cable Marker Sleeve - 15mm long - for cable O/D 6.0-10.0mm - pkt of 500 (9381.0)
KHE70.0/15	Cable Marker Sleeve - 15mm long - for cable O/D 9.0-15.0mm - pkt of 250 (9386.0)

CABLE TIE MARKERS - PRINTED TO ORDER

PRINTED CABLE TIE MARKERS



MCKMS...
range

MCKM10/23WP	Cable Tie Marker - 23mm x 10mm wide - Maxicard of 32 Tags - white (3303.7)
MCKMS10/23YP	Cable Tie Marker - 23mm x 10mm wide - Maxicard of 32 Tags - yellow (3303.8)
MCKMS10/23RP	Cable Tie Marker - 23mm x 10mm wide - Maxicard of 32 Tags - red (3303.9)
MCKMS10/23BP	Cable Tie Marker - 23mm x 10mm wide - Maxicard of 32 Tags - blue (3303.5)
MCKMS14/23WP	Cable Tie Marker - 23mm x 14mm wide - Maxicard of 32 Tags - white (3304.7)
MCKMS14/23YP	Cable Tie Marker - 23mm x 14mm wide - Maxicard of 32 Tags - yellow (3304.8)
MCKMS14/23RP	Cable Tie Marker - 23mm x 14mm wide - Maxicard of 32 Tags - red (3304.9)
MCKMS14/23BP	Cable Tie Marker - 23mm x 14mm wide - Maxicard of 32 Tags - blue (3304.5)
MCKMS15/24WP	Cable Tie Marker - 24mm x 15mm wide - Maxicard of 32 Tags - white (3302.7)
MCKMS15/24YP	Cable Tie Marker - 24mm x 15mm wide - Maxicard - 32 Tags - yellow (3302.8)
MCKMS15/24RP	Cable Tie Marker - 24mm x 15mm wide - Maxicard of 32 Tags - red (3302.9)
MCKMS15/24BP	Cable Tie Marker - 24mm x 15mm wide - Maxicard of 32 Tags - blue (3302.5)
MCKMS11/60WP	Cable Tie Marker - 60mm x 11mm wide - Maxicard of 12 Tags - white (3305.7)
MCKMS11/60YP	Cable Tie Marker - 60mm x 11mm wide - Maxicard - 12 Tags - yellow (3305.8)
MCKMS11/60RP	Cable Tie Marker - 60mm x 11mm wide - Maxicard of 12 Tags - red (3305.9)
MCKMS11/60BP	Cable Tie Marker - 60mm x 11mm wide - Maxicard of 12 Tags - blue (3305.5)



MCKMS...
range in-
stalled

All Maxicard products are printed to order - please submit with Excel Spreadsheet

CABLE TIE MARKING SLEEVES



KSH Sleeves
installed

KSH6/33	Cable Marker Sleeve fixed with Cable Ties - for MCESS18/64 - packet of 100 (2383.0)
KSH11/33	Cable Marker Sleeve fixed with Cable Ties - for MCGS7/20 - packet of 100 (2384.0)
KSH4/30	Cable Marker Sleeve fixed with Cable Tie - for MCESS30/60 - packet of 500 (3896.0)

PRINTED KBH CABLE TIE MARKERS & HOLDERS



KBH-S range

KBH-S21YP	Cable Marker Sleeve - 21mm long - Strip of 9 Markers - yellow (2624.0) PRINTED
KBH-S36YP	Cable Marker Sleeve - 36mm long - Strip of 5 Markers - yellow (2532.0) PRINTED
KBH-S57YP	Cable Marker Sleeve - 57mm long - Strip of 3 Markers - yellow (2625.0) PRINTED
KBH-S84YP	Cable Marker Sleeve - 84mm long - Strip of 2 Markers - yellow (2562.0) PRINTED
KBH-SY	Individual Number/Letter - 4mm long - yellow - packet of 100 (2690.0 & 2691.0)
KH70	Cable Marker Sleeve Holder - 70mm long - black - packet of 100 (2654.0)
KH110	Cable Marker Sleeve Holder - 110mm long - black - packet of 100 (2655.0)

All KBH-S21 - 84 products are printed to order - please submit with Excel Spreadsheet

ADHESIVE MARKERS - PRINTED TO ORDER

PRINTED ADHESIVE MARKERS



MCGS... Adhesive Markers



Preparing Adhesive Marker

MCGS6x12/120KP	Device Marker Adhesive Fixing - 6x12mm - Maxicard of 120 Tags - white
MCGS9/17KP	Device Marker Adhesive Fixing - Maxicard of 40 Tags - white (3323.7)
MCGS7/20KWP	Device Marker Adhesive Fixing - 20x7mm - Maxicard of 40 Tags - white (3381.7)
MCGST22/22KWP	Marker Adhesive Fixing - 22x22mm - Maxicard - 16 Tags - white (3344.7)
MCGST27/12,5KWP	Marker Adhesive Fixing - 27x12.5mm - Maxicard - 16 Tags - white (3341.7)
MCGST27/18KWP	Marker Adhesive Fixing - 27x18mm - Maxicard - 16 Tags - white (3342.7)
MCGST27/27KWP	Marker Adhesive Fixing - 27x27mm - Maxicard - 12 Tags - white (3343.7)
MCGST27/8KWP	Marker Adhesive Fixing - 27x8mm - Maxicard of 16 Tags - white (3344.7)
MCGSU17x15KP	Device Marker with Adhesive Fixing - 17mm x 15mm - Maxicard of 16 Tags - white
MCGSU27x15KP	Device Marker with Adhesive Fixing - 27mm x 15mm - Maxicard of 16 Tags - white
MCGSU49x15KP	Device Marker with Adhesive Fixing - 49mm x 15mm - Maxicard of 8 Tags - white
MCGSU60x15KP	Device Marker with Adhesive Fixing - 60mm x 15mm - Maxicard of 8 Tags - white
MCGSU60x30KP	Device Marker with Adhesive Fixing - 60mm x 30mm - Maxicard of 6 Tags - white
MCGSU85.4x54KP	Device Marker with Adhesive Fixing - 85.4mm x 54mm - Maxicard of 2 Tags - white

All MCGSU products are printed to order - please submit with Excel Spreadsheet

DEVICE MARKING SOLUTIONS

PRINTED DEVICE MARKING



MCGS...
Device
Markers

MCGS6x12/120RP	Device Marker - 6mm x 12mm - Maxicard of 120 Tags - white (3884.7)
MCGS8/17RP	ABB Device Marker - Maxicard of 40 Tags - white (3320.7)
MCGS8/17RtP	Schneider Device Marker - Maxicard of 40 Tags - white (3321.7)
MCGS7/20RP	Siemens Device Marker - Maxicard of 40 Tags - white (3329.7)

All MCGS products are printed to order - please submit with Excel Spreadsheet

PRINTED 22MM MARKERS & HOLDERS



MCGST...
Device
Markers

MCGST27/12,5RSP	Label Holder Device Marker - 27x12.5mm - Maxicard -16 Tags - silver (3336.0)
MCGST27/12,5RWP	Label Holder Device Marker - 27x12.5mm - Maxicard -16 Tags - white (3336.7)
MCGST27/18RSP	Label Holder Device Marker - 27x18mm - Maxicard of 16 Tags - silver (3337.0)
MCGST27/18RWP	Label Holder Device Marker - 27x18mm - Maxicard of 16 Tags - white (3337.7)
MCGST27/27RSP	Label Holder Device Marker - 27x27mm - Maxicard of 12 Tags - silver (3338.0)
MCGST27/27RWP	Label Holder Device Marker - 27x27mm - Maxicard of 12 Tags - white (3338.7)
MCGST27/8RSP	Label Holder Device Marker - 27x8mm - Maxicard of 16 Tags - silver (3340.0)
MCGST27/8RWP	Label Holder Device Marker - 27x8mm - Maxicard of 16 Tags - white (3340.7)
GST-H27x8	Label Holder for 22 Diameter Device for MCGST 27/8
GST-H27x12.5	Label Holder for 22 Diameter Device for MCGST 27/12.5
GST-H27x18	Label Holder for 22 Diameter Device for MCGST 27/18
GST-H27x27	Label Holder for 22 Diameter Device for MCGST 27/27

All Maxicard products are printed to order - please submit with Excel Spreadsheet

PRINTED DEVICE MARKERS FOR GSU HOLDERS



MCGSU17x15RP	Device Marker - 17mm x 15mm - Maxicard of 16 Tags - white
MCGSU27x15RP	Device Marker - 27mm x 15mm - Maxicard of 16 Tags - white
MCGSU49x15RP	Device Marker - 49mm x 15mm - Maxicard of 8 Tags - white
MCGSU60x15RP	Device Marker - 60mm x 15mm - Maxicard of 8 Tags - white
MCGSU60x30RP	Device Marker - 60mm x 30mm - Maxicard of 6 Tags - white
MCGSU85.5x54RP	Device Marker - 85.4mm x 54mm - Maxicard of 2 Tags - white

All MCGSU products are printed to order - please submit with Excel Spreadsheet

GSU DEVICE MARKER HOLDERS



STRMCGSU
strips
installed

GSU-H17x15	Device Marker Holder for MC GSU 17x15R
GSU-H27x15	Device Marker Holder for MC GSU 27x15R
GSU-H49x15	Device Marker Holder for MC GSU 49x15R
GSU-H60x15	Device Marker Holder for MC GSU 60x15R
GSU-H60x30	Device Marker Holder for MC GSU 60x30R
GSU-H85.4x54	Device Marker Holder for MC GSU 85.4x54R
STRMCGSU17x15	Device Marker Holder Protective Strip for MC GSU 17x15R
STRMCGSU27x15	Device Marker Holder Protective Strip for MC GSU 27x15R
STRMCGSU49x15	Device Marker Holder Protective Strip for MC GSU 49x15R
STRMCGSU60x15	Device Marker Holder Protective Strip for MC GSU 60x15R
STRMCGSU60x30	Device Marker Holder Protective Strip for MC GSU 60x30R
STRMCGSU85.4x54	Device Marker Holder Protective Strip for MC GSU 85.4x54R



MCGSU...
range
installed

EMS-3 MARKING SYSTEM

TECHNICAL INFORMATION



CONTA-CLIP MARKING SYSTEM

Marking cables, connectors and devices to provide unmistakable, clearly arranged and permanently legible identification protects against mix-ups, increases safety and reduces work levels, which in turn reduces manufacturing and maintenance costs including those caused by production down-times.

CONTA-CLIP offer a wide variety of options for marking terminal blocks, cables, wires and devices.

CONTA-CLIP uses the EMS-3 Plotter manufactured in Germany and still the most cost effective way to mark products reliably.

CONTA-CLIP EMS-3 MARKING SYSTEM



EMS-3 Plotter



PPE plotter pen

EMS-3 set	Plotter set includes Plotter, 1 x CCI-10 Maxicard Inlay, 1 x PPE0.35 pen
CCI-10	Maxicard Inlay suitable for all Maxicard products
EMS-3 Service Kit	Kit includes primer plates & ink well inserts
PPE0.18ED*	Plotter pen - black disposable - suitable for PA Markers - Slowdrying - 0.18mm
PPE0.25ED*	Plotter pen - black disposable - suitable for PA Markers - Slowdrying - 0.25mm
PPE0.35ED*	Plotter pen - black disposable - suitable for PA Markers - Slowdrying - 0.35mm
PPE0.5ED*	Plotter pen - black disposable - suitable for PA Markers - Slowdrying - 0.5mm
PPE1.0ED*	Plotter pen - black disposable - suitable for PA Markers - Slowdrying - 1.0mm
PPE0.25EDR	Plotter pen - RED disposable - suitable for PA Markers - Slowdrying - 0.25mm
PPE0.25EDB	Plotter pen - BLUE disposable - suitable for PA Markers - Slowdrying - 0.25mm
PPE0.25EDG	Plotter pen - GREEN disposable - suitable for PA Markers - Slowdrying - 0.25mm

** Recommended for normal use*

EMS-3 SYSTEM - TERMINAL & MARKING

UNPRINTED TERMINAL MARKING



MCBSTR6/120



MCBSTR6/120P
installed

MCSB4/200	Terminal Marker - 4 mm wide - Maxicard of 200 Markers (4946.7)
MCSB5/200	Terminal Marker - 5 mm wide - Maxicard of 200 Markers (3300.7)
MCSB6/200	Terminal Marker - 6 mm wide - Maxicard of 200 Markers (3301.7)
MCSB8/160	Terminal Marker - 5x8mm - Maxicard of 160 Markers (3328.7)
MCBSTR5/144	Terminal Marker - 5 x 10mm wide - Maxicard of 144 Markers (3309.7)
MCBSTR5/144MI	Terminal Marker - 5 x 10mm wide - Maxicard of 144 Markers (3310.7)
MCBSTR5x12/144	Terminal Marker - 5x12mm - Maxicard of 144 Markers (3380.7)
MCBSTR6/120	Terminal Marker - 6 x 12 mm wide - Maxicard of 120 Markers (3314.7)
MCBSTR8x12/84	Terminal Marker - 8x12mm - Maxicard of 84 Markers (9406.7)
MCBSTR10x12/40	Terminal Marker - 10x12mm - Maxicard of 40 Markers (9408.7)

UNPRINTED GROUP MARKERS

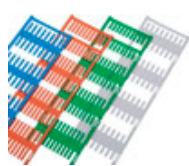


SchT9 installed

ZSchT6	Group Markers for ZES35 end stop
SchT9	Group Marker for ES35/2/K & ES35/K/ST end stop - 8mm wide
SchT10	Group Marker for ES35/K/ST end stop - 9.5mm wide
SchT12	Group Marker Carrier for AS3/10G (...)

EMS-3 SYSTEM - CABLE MARKING

UNPRINTED CABLE MARKING SOLUTIONS - SLEEVE INSERT TYPE



MCESS15/80 range



MCESS range installed



MCESS range with sleeve

MCESS12/64	Insertable Tags - 12mm long - Maxicard of 64 Tags - white (3316.7)
MCESS12/64B	Insertable Tags - 12mm long - Maxicard of 64 Tags - blue (3316.5)
MCESS12/64R	Insertable Tags - 12mm long - Maxicard of 64 Tags - red (3316.9)
MCESS12/64Y	Insertable Tags - 12mm long - Maxicard of 64 Tags - yellow (3316.8)
MCESS12/64G	Insertable Tags - 12mm long - Maxicard of 64 Tags - green (3316.1)
MCESS12/64O	Insertable Tags - 12mm long - Maxicard of 64 Tags - orange (3316.3)
MCESS15/80	Insertable Tags - 15mm long - Maxicard of 80 Tags - white (3317.7)
MCESS15/80B	Insertable Tags - 15mm long - Maxicard of 80 Tags - blue (3317.5)
MCESS15/80R	Insertable Tags - 15mm long - Maxicard of 80 Tags - red (3317.9)
MCESS15/80Y	Insertable Tags - 15mm long - Maxicard of 80 Tags - yellow (3317.8)
MCESS15/80G	Insertable Tags - 15mm long - Maxicard of 80 Tags - green (3317.1)
MCESS15/80O	Insertable Tags - 15mm long - Maxicard of 80 Tags - orange (3317.3)
MCESS18/64	Insertable Tags - 18mm long - Maxicard of 64 Tags - white (3318.7)
MCESS18/64B	Insertable Tags - 18mm long - Maxicard of 64 Tags - blue (3318.5)
MCESS18/64R	Insertable Tags - 18mm long - Maxicard of 64 Tags - red (3318.9)
MCESS18/64Y	Insertable Tags - 18mm long - Maxicard of 64 Tags - yellow (3318.8)
MCESS18/64G	Insertable Tags - 18mm long - Maxicard of 64 Tags - green (3318.1)
MCESS18/64O	Insertable Tags - 18mm long - Maxicard of 64 Tags - orange (3318.3)
MCESS20/80	Insertable Tags - 20mm long - Maxicard of 80 Tags - white (3319.7)
MCESS20/80B	Insertable Tags - 20mm long - Maxicard of 80 Tags - blue (3319.5)
MCESS20/80R	Insertable Tags - 20mm long - Maxicard of 80 Tags - red (3319.9)
MCESS20/80Y	Insertable Tags - 20mm long - Maxicard of 80 Tags - yellow (3319.8)
MCESS20/80G	Insertable Tags - 20mm long - Maxicard of 80 Tags - green (3319.1)
MCESS20/80O	Insertable Tags - 20mm long - Maxicard of 80 Tags - orange (3319.3)
MCESS30/60W	Insertable Tags - 30mm long - Maxicard of 60 Tags - white (3354.7)
MCESS30/60B	Insertable Tags - 30mm long - Maxicard of 60 Tags - blue (3354.5)
MCESS30/60R	Insertable Tags - 30mm long - Maxicard of 60 Tags - red (3354.9)
MCESS30/60Y	Insertable Tags - 30mm long - Maxicard of 60 Tags - yellow (3354.8)
MCESS30/60G	Insertable Tags - 30mm long - Maxicard of 60 Tags - green (3354.1)
MCESS30/60O	Insertable Tags - 30mm long - Maxicard of 60 Tags - orange (3354.3)

Sleeves for the above inserts are located on pages 73 & 150

UNPRINTED CABLE MARKING SOLUTIONS - CLIP-ON TYPE

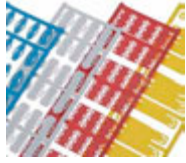


MCKMC0/4x12W	Clip-on - 12mm long - Cable O/D of 0.9-2.6mm - Maxicard of 40 tags - white
MCKMC0/4x21W	Clip-on - 21mm long - Cable O/D of 0.9-2.6mm - Maxicard of 40 tags - white
MCKMC0/4x30W	Clip-on - 30mm long - Cable O/D of 0.9-2.6mm - Maxicard of 30 tags - white
MCKMC1/4x12W	Clip-on - 12mm long - Cable O/D of 2.0-3.0mm - Maxicard of 40 tags - white

EMS-3 SYSTEM

- CABLE TIE & ADHESIVE MARKERS

UNPRINTED CABLE MARKING SOLUTIONS - CABLE TIE TYPE



MCKMS... range

MCKMS10/23W	Cable Tie Marker - 23mm x 10mm wide - Maxicard of 32 Tags - white (3303.7)
MCKMS10/23Y	Cable Tie Marker - 23mm x 10mm wide - Maxicard of 32 Tags - yellow (3303.8)
MCKMS10/23R	Cable Tie Marker - 23mm x 10mm wide - Maxicard of 32 Tags - red (3303.9)
MCKMS10/23B	Cable Tie Marker - 23mm x 10mm wide - Maxicard of 32 Tags - blue (3303.5)
MCKMS14/23W	Cable Tie Marker - 23mm x 14mm wide - Maxicard of 32 Tags - white (3304.7)
MCKMS14/23Y	Cable Tie Marker - 23mm x 14mm wide - Maxicard of 32 Tags - yellow (3304.8)
MCKMS14/23R	Cable Tie Marker - 23mm x 14mm wide - Maxicard of 32 Tags - red (3304.9)
MCKMS14/23B	Cable Tie Marker - 23mm x 14mm wide - Maxicard of 32 Tags - blue (3304.5)
MCKMS15/24W	Cable Tie Marker - 24mm x 15mm wide - Maxicard of 32 Tags - white (3302.7)
MCKMS15/24Y	Cable Tie Marker - 24mm x 15mm wide - Maxicard - 32 Tags - yellow (3302.8)
MCKMS15/24R	Cable Tie Marker - 24mm x 15mm wide - Maxicard of 32 Tags - red (3302.9)
MCKMS15/24B	Cable Tie Marker - 24mm x 15mm wide - Maxicard of 32 Tags - blue (3302.5)
MCKMS11/60W	Cable Tie Marker - 60mm x 11mm wide - Maxicard of 12 Tags - white (3305.7)
MCKMS11/60Y	Cable Tie Marker - 60mm x 11mm wide - Maxicard - 12 Tags - yellow (3305.8)
MCKMS11/60R	Cable Tie Marker - 60mm x 11mm wide - Maxicard of 12 Tags - red (3305.9)
MCKMS11/60B	Cable Tie Marker - 60mm x 11mm wide - Maxicard of 12 Tags - blue (3305.5)



MCKMS... range installed

UNPRINTED ADHESIVE MARKERS



MCGS... Adhesive Markers

MCGS6x12/120K	Device Marker Adhesive Fixing - 6x12mm - Maxicard of 120 Tags - white
MCGS9/17K	Device Marker with Adhesive Fixing - Maxicard of 40 Tags - white (3323.7)
MCGS7/20KW	Device Marker with Adhesive Fixing - Maxicard of 40 Tags - white (3381.7)
MCGST22/22KW	Marker Adhesive Fixing - 22x22mm - Maxicard - 16 Tags - white (3344.7)
MCGST27/12,5KW	Marker Adhesive Fixing - 27x12.5mm - Maxicard - 16 Tags - white (3341.7)
MCGST27/18KW	Marker Adhesive Fixing - 27x18mm - Maxicard - 16 Tags - white (3342.7)
MCGST27/27KW	Marker Adhesive Fixing - 27x27mm - Maxicard - 12 Tags - white (3343.7)
MCGST27/8KW	Marker Adhesive Fixing - 27x8mm - Maxicard of 16 Tags - white (3339.7)
MCGSU17x15K	Device Marker with Adhesive Fixing - 17x15mm - Maxicard of 16 Tags - white
MCGSU27x15K	Device Marker with Adhesive Fixing - 27x15mm - Maxicard of 16 Tags - white
MCGSU49x15K	Device Marker with Adhesive Fixing - 49x15mm - Maxicard of 8 Tags - white
MCGSU60x15K	Device Marker with Adhesive Fixing - 60x15mm - Maxicard of 8 Tags - white
MCGSU60x30K	Device Marker with Adhesive Fixing - 60x30mm - Maxicard of 6 Tags - white
MCGSU85.4x54K	Device Marker with Adhesive Fixing - 85.4x54mm - Maxicard of 2 Tags - white
MCGSU85.4x54KY	Device Marker with Adhesive Fixing - 85.4x54mm - Maxicard of 2 Tags - yellow



Preparing Adhesive Marker

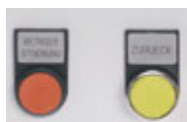
EMS-3 SYSTEM - DEVICE MARKING

UNPRINTED DEVICE MARKING



MCGS6x12/120R	Device Marker - 6mm x 12mm - Maxicard of 120 Tags - white (3884.7)
MCGS8/17R	ABB Device Marker - Maxicard of 40 Tags - white (3320.7)
MCGS8/17Rt	Schneider/Siemens Device Marker - Maxicard of 40 Tags - white (3321.7)
MCGS7/20R	Siemens Device Marker - Maxicard of 40 Tags - white (3329.7)

UNPRINTED 22MM MARKERS



MCGST... Device Markers

MCGST27/12,5RS	Label Holder Device Marker - 27x12.5mm - Maxicard -16 Tags - silver (3336.0)
MCGST27/12,5RW	Label Holder Device Marker - 27x12.5mm - Maxicard -16 Tags - white (3336.7)
MCGST27/18RS	Label Holder Device Marker - 27x18mm - Maxicard of 16 Tags - silver (3337.0)
MCGST27/18RW	Label Holder Device Marker - 27x18mm - Maxicard of 16 Tags - white (3337.7)
MCGST27/27RSP	Label Holder Device Marker - 27x27mm - Maxicard of 12 Tags - silver (3338.0)
MCGST27/27RW	Label Holder Device Marker - 27x27mm - Maxicard of 12 Tags - white (3338.7)
MCGST27/8RS	Label Holder Device Marker - 27x8mm - Maxicard of 16 Tags - silver (3340.0)
MCGST27/8RW	Label Holder Device Marker - 27x8mm - Maxicard of 16 Tags - white (3340.7)
GST-H27x8	Label Holder for 22 Diameter Device for MCGST 27/8
GST-H27x12.5	Label Holder for 22 Diameter Device for MCGST 27/12.5
GST-H27x18	Label Holder for 22 Diameter Device for MCGST 27/18
GST-H27x27	Label Holder for 22 Diameter Device for MCGST 27/27

UNPRINTED DEVICE MARKERS FOR GSU HOLDERS



MCGSU49x15R

MCGSU17x15R	Device Marker - 17mm x 15mm - Maxicard of 16 Tags - white
MCGSU27x15R	Device Marker - 27mm x 15mm - Maxicard of 16 Tags - white
MCGSU49x15R	Device Marker - 49mm x 15mm - Maxicard of 8 Tags - white
MCGSU60x15R	Device Marker - 60mm x 15mm - Maxicard of 8 Tags - white
MCGSU60x30R	Device Marker - 60mm x 30mm - Maxicard of 6 Tags - white
MCGSU85.4x54R	Device Marker - 85.4mm x 54mm - Maxicard of 2 Tags - white

GSU DEVICE MARKER HOLDERS



STRMCGSU strips installed



MCGSU... range installed

GSU-H17x15	Device Marker Holder for MC GSU 17x15R - packet of 80
GSU-H27x15	Device Marker Holder for MC GSU 27x15R - packet of 80
GSU-H49x15	Device Marker Holder for MC GSU 49x15R - packet of 40
GSU-H60x15	Device Marker Holder for MC GSU 60x15R - packet of 40
GSU-H60x30	Device Marker Holder for MC GSU 60x30R - packet of 30
GSU-H85.4x54	Device Marker Holder for MC GSU 85.4x54R - packet of 10
STRMCGSU17x15	Device Marker Holder Protective Strip for MC GSU 17x15R - pkt of 80
STRMCGSU27x15	Device Marker Holder Protective Strip for MC GSU 27x15R - pkt of 80
STRMCGSU49x15	Device Marker Holder Protective Strip for MC GSU 49x15R - pkt of 40
STRMCGSU60x15	Device Marker Holder Protective Strip for MC GSU 60x15R - pkt of 40
STRMCGSU60x30	Device Marker Holder Protective Strip for MC GSU 60x30R - pkt of 30
STRMCGSU85.4x54	Device Marker Holder Protective Strip for MC GSU 85.4x54R - pkt of 10