

Energy meters

DIN-rail mounted energy meter designed for the measurement of active energy produced and consumed in three-phase systems. The current insertion is direct for values up to 100A. The integrated Wi-Fi module is used to manage the device even remotely using your smartphone or tablet. You need to connect the device to your home router and install the dedicated App on your smartphone or tablet, available for Android and iOS devices. On the application, it is possible to view the measurements of the total energy, partial energy and instantaneous current, voltage and power. It has a configurable pulse output for remote energy counting.



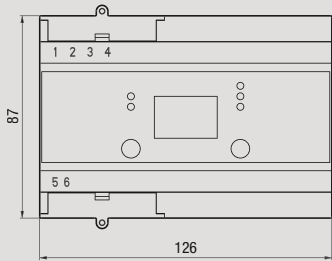
ENERGY-400 D100 Wi-Fi

- 1 Wi-Fi module compatible with 802.11 b/g/n standard
- 2 Power supply LED and Wi-Fi network connection status signal
- 3 Wi-Fi configuration key
- 4 Key for page selection and configuration for backlighting
- 5 Energy count indication LED
- 6 Bluetooth interface for device configuration
- 7 App for iOS and Android smartphones and tablets

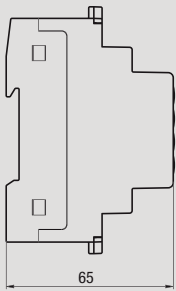


DIMENSIONS (mm)

Front view

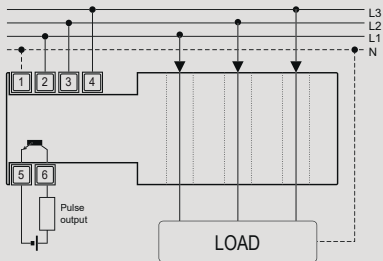


Side view



CONNECTION DIAGRAM

Diagram



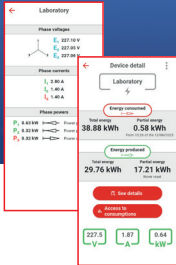
MEASUREMENT AND CONTROL

THREE-PHASE METERS WITH DIRECT CONNECTION WITH WI-FI AND BLUETOOTH INTERFACE

- Direct insertion max 100 A
- Connection via direct routing of the current cables (maximum section 25 mm) in a vertical section along the housing body
- Bluetooth interface
- Wi-Fi interface with standard 802.11 b/g/n
- Operating frequency band: 2.4 GHz
- Precision: class B
- Display via 7-digit LCD display (non-resettable total energy) + 5 digits (resettable partial energy)
- Configurable display backlight (always on or timed)
- LED indicator for active energy consumed and produced
- Pulse output for configurable energy counting (consumed or produced)
- Values shown on the display:
  - energy consumed (total or partial)
  - power factor
  - system power
  - energy produced (total or partial)
- "Local operation lock" function: allows management of the device exclusively with the App (keyboard presses are ignored)

App features

Characteristics		Premium Version
Display	energy partial	■
	energy total	■
	current	■
	voltage	■
	power	■
Multi-user		■
Charts	monthly	■
	daily	■
	hourly	■
Historical data download		■
Power threshold alarm		■
Energy threshold exceeded alert		■
Partial meter reset		■
Transfer of devices to other users		■



TECHNICAL INFORMATION

GENERAL CHARACTERISTICS

Power supply	Vac	230 / 400 (-15% ÷ 10%)
Frequency	Hz	50/60
Absorption	VA (W)	3,4 (1,8)
Starting current I <sub>st</sub>	mA	20
Minimum current I <sub>min</sub>	A	0,25
Reference current I <sub>ref</sub>	A	5
Maximum current I <sub>max</sub>	A	100
Indicator LEDs		5 indicator LEDs operating status
Precision		Class B
Total energy resolution	kWh	1
Partial energy resolution	kWh	0,01/0,1/1

Operating temperature	°C	-10 ÷ 45
Storage temperature	°C	-25 ÷ 70
Humidity	RH	20 ÷ 90% non-condensing
Maximum cable section	mm²	2,5 (terminals)
Maximum section of power cables	mm²	25
Container		7 DIN modules
Degree of protection		IP20 / 51 on the front
Opti-isolated pulse output		
Pulse weight	Wh	100
Duration	ms	100
Voltage	Vdc	9 ÷ 24
Current	mA	< 20

REFERENCE STANDARDS

Compliance with the Community Directives 2014/53/UE (RED) is declared with reference to the following Standards:  
• EN 61010-1 • EN 50470-1 • EN 50470-3 • EN 62479 • EN 300 328 • EN 301 489-1 • EN 301 489-17

Code	Model	Description	Dimensions
VE799300	Energy-400 D100 Wi-Fi	Three-phase active energy meter with Wi-Fi interface	7 DIN modules



ENERGY-400 D100 WI-FI-ENG-202507

